

REFERENCE PLAN OF PART OF LOT A DISTRICT LOT 131 AND SECTION 16 TOWNSHIP 26 OSOYOOS DIVISION YALE DISTRICT PLAN KAP61419

PLAN EPP129151

PURSUANT TO SECTION 107 OF THE LAND TITLE ACT

BCGS 82E083



The intended plot size of this plan is 560mm in width by 432mm in height (C size) when plotted at a scale of 1:800
(All distances are in metres)

LEGEND

- ⊙ Denotes Standard Capped post (Type 4) found
- Denotes Standard Iron post (Type 5) found
- Denotes Standard Iron post (Type 5) placed
- ⊕ Denotes Control Monument found
- NF Denotes Nothing Found
- (R) Denotes Radial Bearing

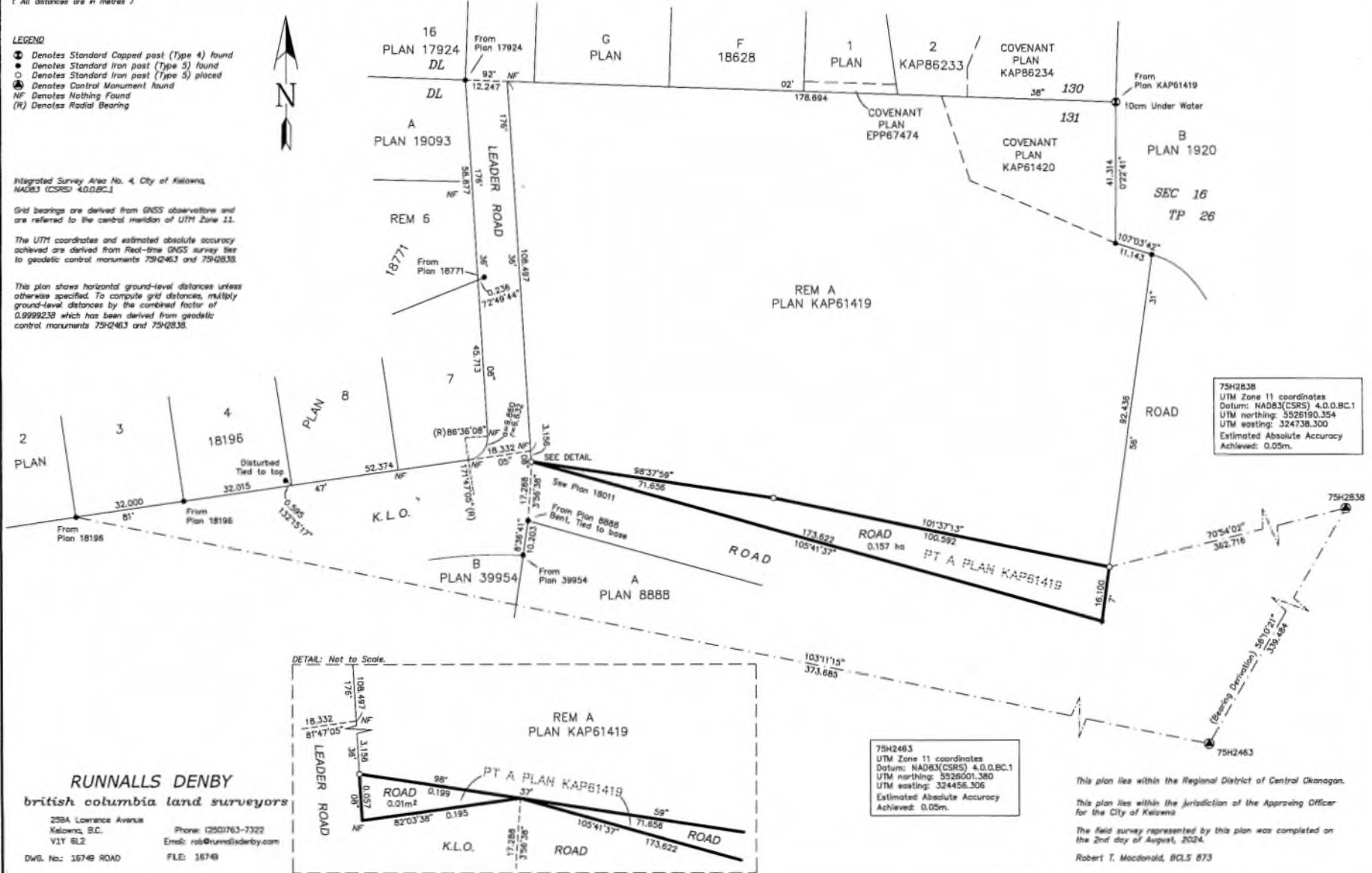


Integrated Survey Area No. 4, City of Kelowna,
NAD83 (CSRS) 4.0.0.BC.1

Grid bearings are derived from GNSS observations and are referred to the central meridian of UTM Zone 11.

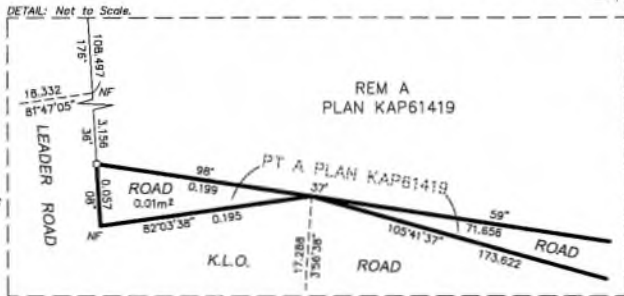
The UTM coordinates and estimated absolute accuracy achieved are derived from Real-time GNSS survey ties to geodetic control monuments 75H2463 and 75H2838.

This plan shows horizontal ground-level distances unless otherwise specified. To compute grid distances, multiply ground-level distances by the combined factor of 0.9999259 which has been derived from geodetic control monuments 75H2463 and 75H2838.



75H2838
UTM Zone 11 coordinates
Datum: NAD83(CSRS) 4.0.0.BC.1
UTM northing: 5526190.354
UTM easting: 324738.300
Estimated Absolute Accuracy
Achieved: 0.05m.

75H2463
UTM Zone 11 coordinates
Datum: NAD83(CSRS) 4.0.0.BC.1
UTM northing: 5526001.380
UTM easting: 324456.306
Estimated Absolute Accuracy
Achieved: 0.05m.



RUNNALLS DENBY
british columbia land surveyors
255A Lawrence Avenue
Kelowna, B.C.
V1Y 8L2
Phone: (250)763-7322
Email: rob@runnalldenby.com
DWG. No.: 16749 ROAD FLE: 16749

This plan lies within the Regional District of Central Okanagan.
This plan lies within the jurisdiction of the Approving Officer for the City of Kelowna.
The field survey represented by this plan was completed on the 2nd day of August, 2024.
Robert T. Macdonald, BCLS 873